

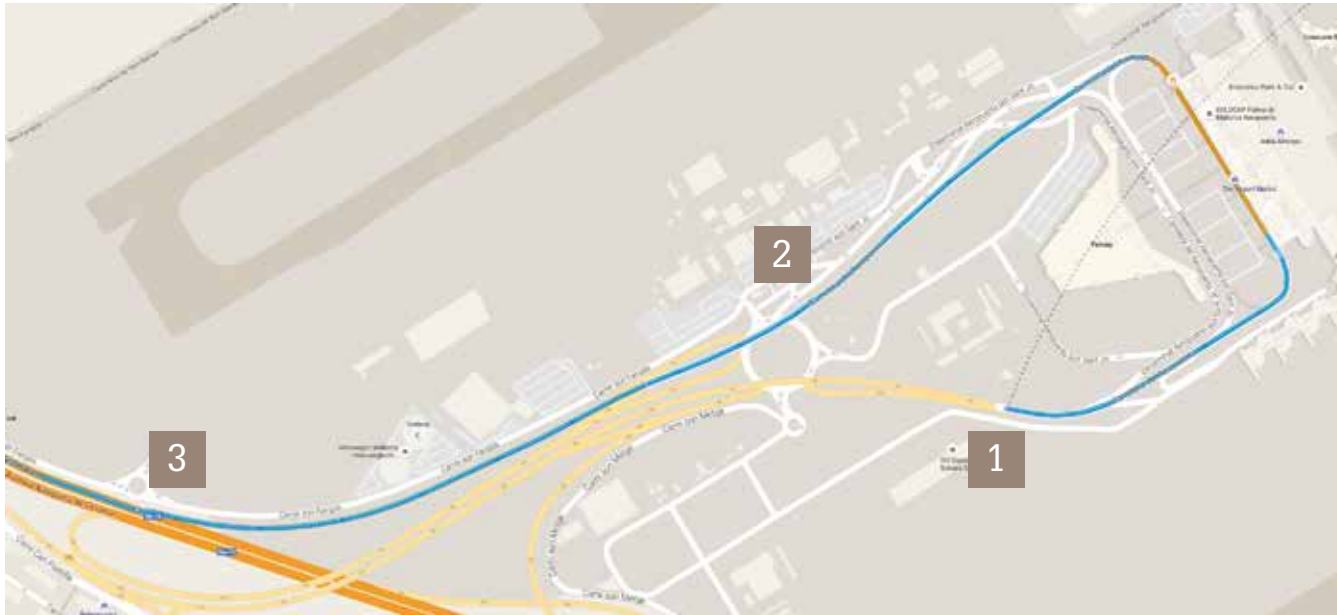


steves mallorca

Directions
Palma de Mallorca Airport
to Ca'n Cap Fotut



Directions: Palma de Mallorca Airport to Ca'n Cap Fotut



- 1 Head east on Carretera del Aeropuerto toward Disseminat Aeropuerto son Sant Jo. 1.8 km
- 2 Keep right at the fork, follow signs for Palma and merge onto Ma-19. 850 m
- 3 Merge onto Ma-19 follow signs for Andratx/Alcudia 4.1 km

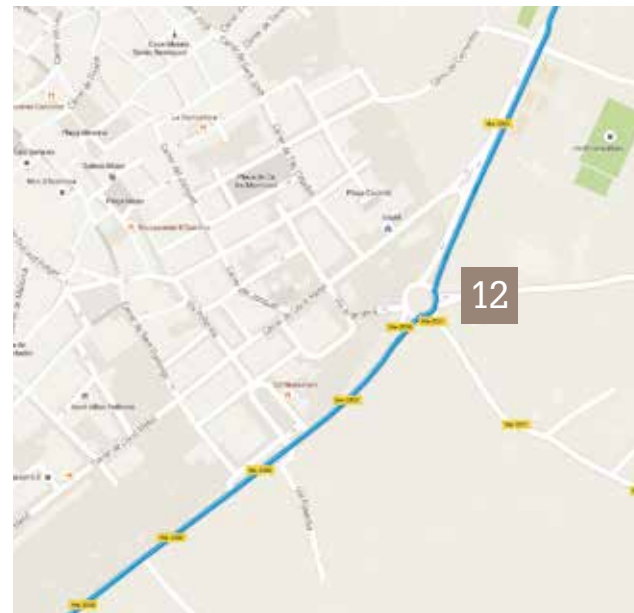
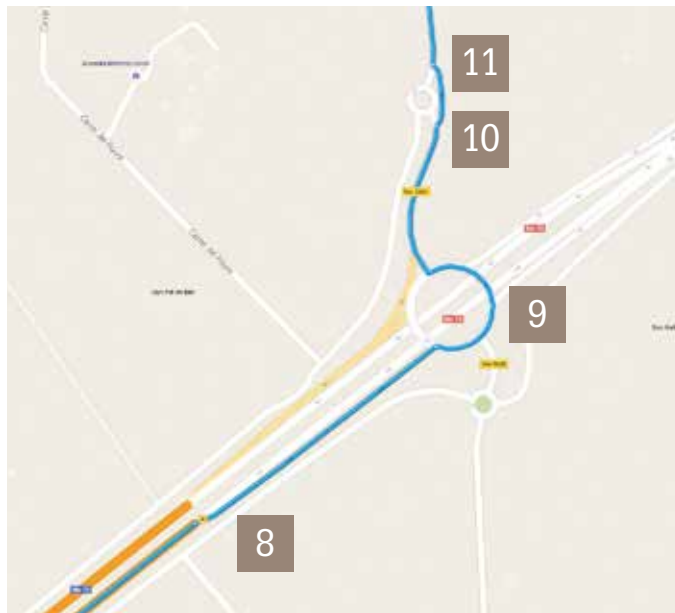


- 4 Use the right 2 lanes to take exit 3 toward Andratx/Alcudia 290 m
- 5 Continue onto Ma-20, keeping left to stay on Ma20. 2.6 km

Directions: Palma de Mallorca Airport to Ca'n Cap Fotut



- 6 Use the right lane to take exit 3 for Ma-13 toward Inca/Port D'Alcúdia. 450 m
- 7 Continue onto Ma-13 and follow signs for Port D'Alcudia. 38.9 km

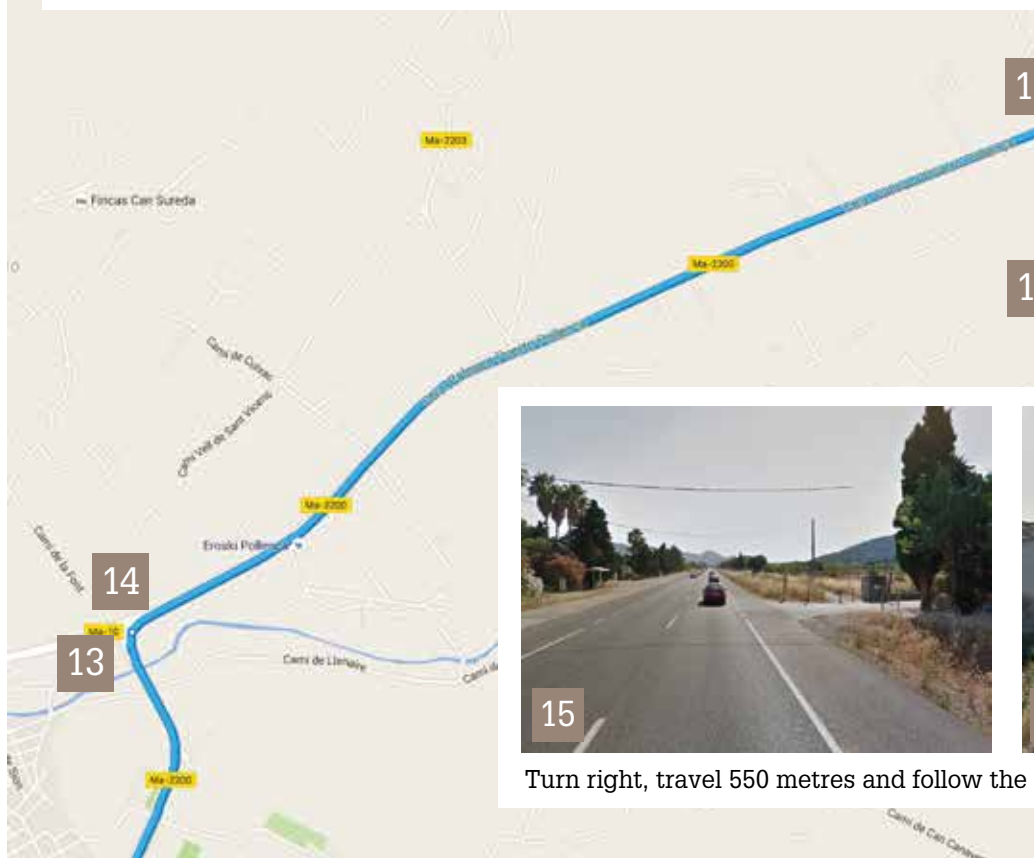
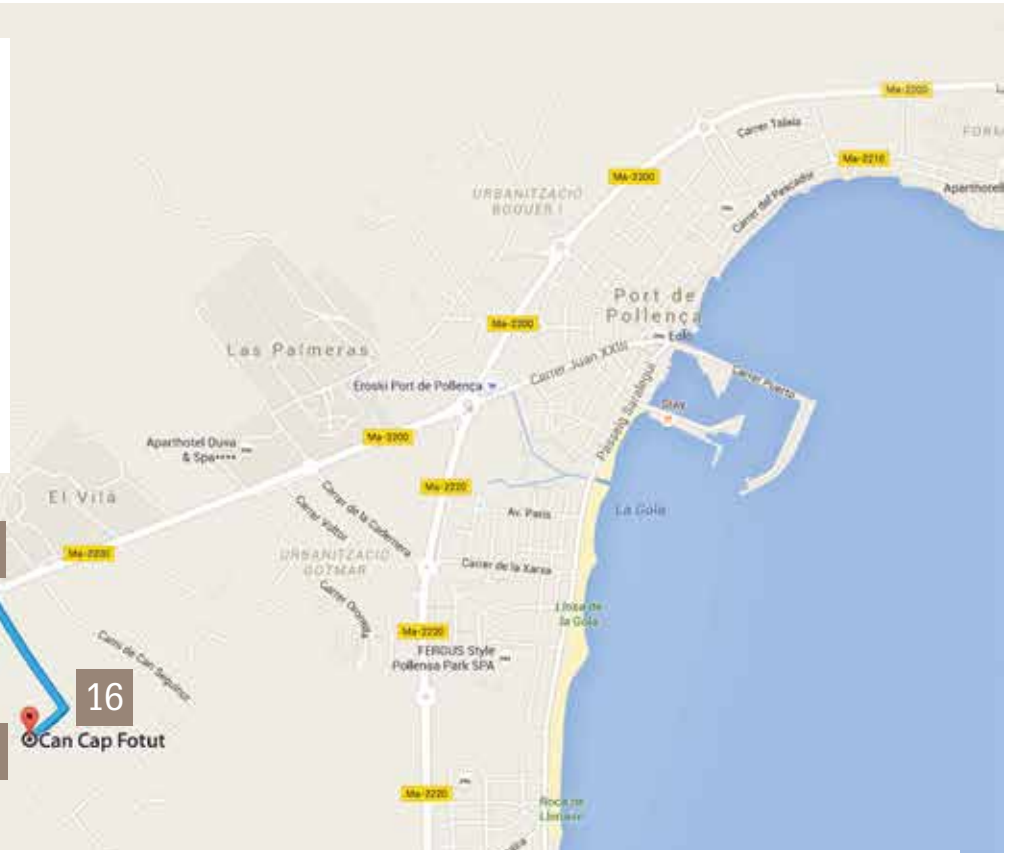


- 8 Take exit 40 toward Pollença. 350 m
- 9 At the roundabout, take the 3rd exit onto Ma-2200. 350 m
- 10 Slight right toward Ma-2200. 73 m
- 11 Slight right onto Ma-2200. 10.2 km
- 12 At the roundabout, take the 3rd exit and stay on Ma-2200. 1.1 km

Directions: Palma de Mallorca Airport to Ca'n Cap Fotut



At the roundabout, take 1st exit onto Ctra. Palma a Puerto Pollença/Ma-2200. 3.4 km



Turn right, travel 550 metres and follow the road to the right. 350 metres ahead is a green electric gate - that is the entrance.